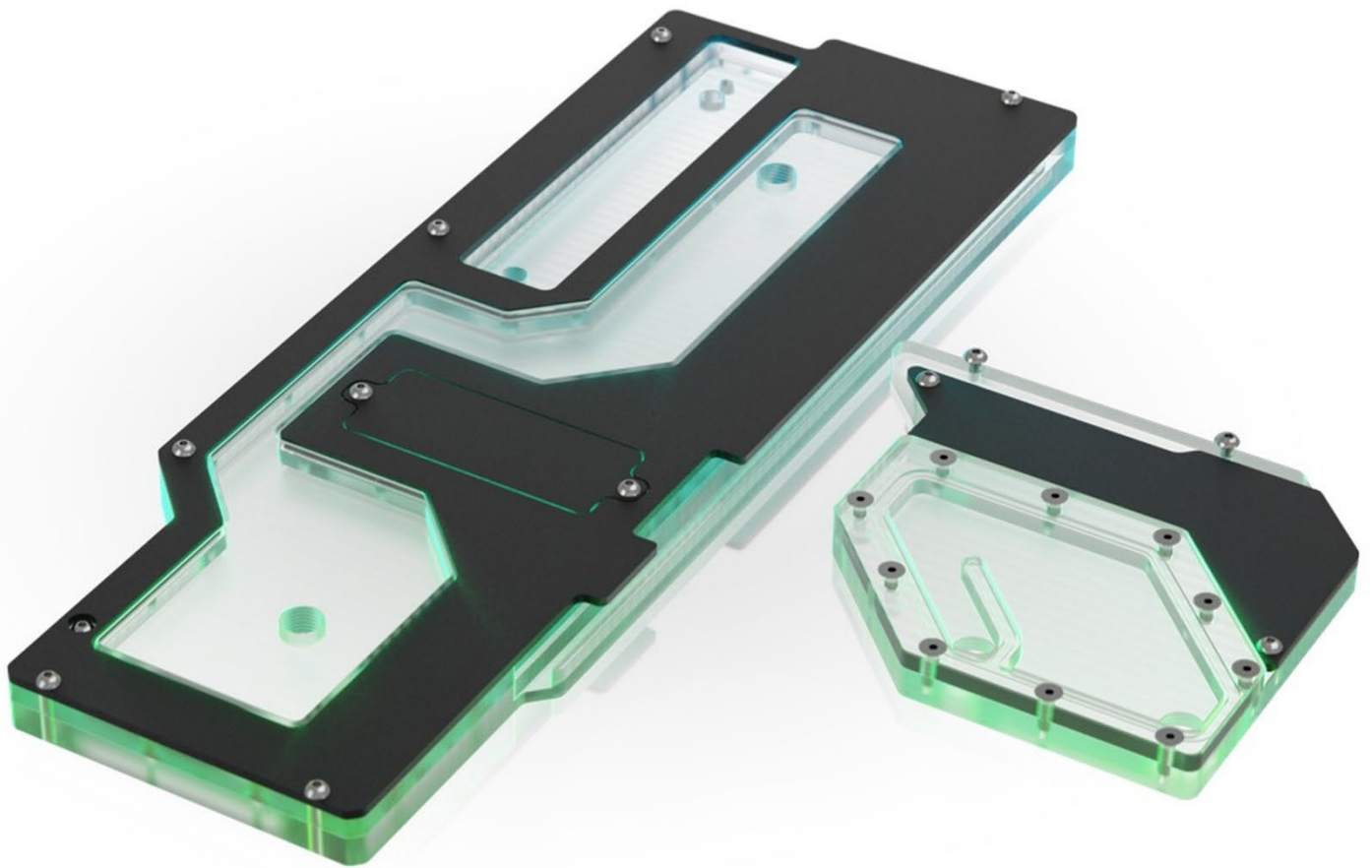


SPECTRE 4

PSU TOP SHROUD & REAR I/O DISTRIBUTION PLATE SET



MANUAL

Revision 1.0

Table of Contents

Introduction	2
Specifications & Included Items	2
Compatibility	2
Installation.....	3
Install PSU Top Shroud Distribution Plate	3
Install Rear I/O Distribution Plate	4

Introduction

The Spectre 4 PSU Shroud & Rear I/O Distribution Plates are designed for both Spectre 4 & Spectre 4 Aevum Water-cooling Cases and are compatible with all addons. They can be used in single or dual loop mode, with or without the Spectre 4 & Spectre 4 Aevum Dual Loop Side Panel. They can also be used independently of each other. The Rear I/O Distribution Plate attaches to the Rear I/O Panel above the GPU, it has pass throughs for the Dual loop Side panel with a cover which can be attached to cover up the pass throughs if the Dual Loop Side panel is not being used. The PSU Shroud Distribution Plate can be used with horizontal or vertically mounted GPUs. It sits on top of the PSU shroud and works well with GPU water-blocks which have ports on the end. Similar to the Spectre Elite Front and Top Panel Distribution Plates, these Distribution Plates are primarily designed to improve aesthetics although they can improve the loop layout in some scenarios.

Specifications & Included Items

Included	Spectre 4 PSU Shroud & Rear I/O Distribution Plate Set.
LED Strip	30cm ARGB 5V w/ 50cm Black Cable.
Materials	Cast Acrylic.
Fasteners	Stainless Steel Silver.
Gaskets	Silicone Black.
Materials	Cast Acrylic.
Manufacturing Process	CNC Mill. CNC Router. Laser Cutter.
Assembly	Assembled by hand and pressure tested.
Testing & Validation	All Distribution Plates are factory pressure tested and precise fastener tension is applied.

Compatibility

- Spectre 4 Water-cooling Case.
- Spectre 4 Aevum Limited Edition Water-cooling Case.
- Spectre 4 Aevum Valhalla Limited Edition Water-cooling Case.
- Spectre 4 Aevum Dark Water-cooling Case.

Rear I/O Distribution Plate Only:

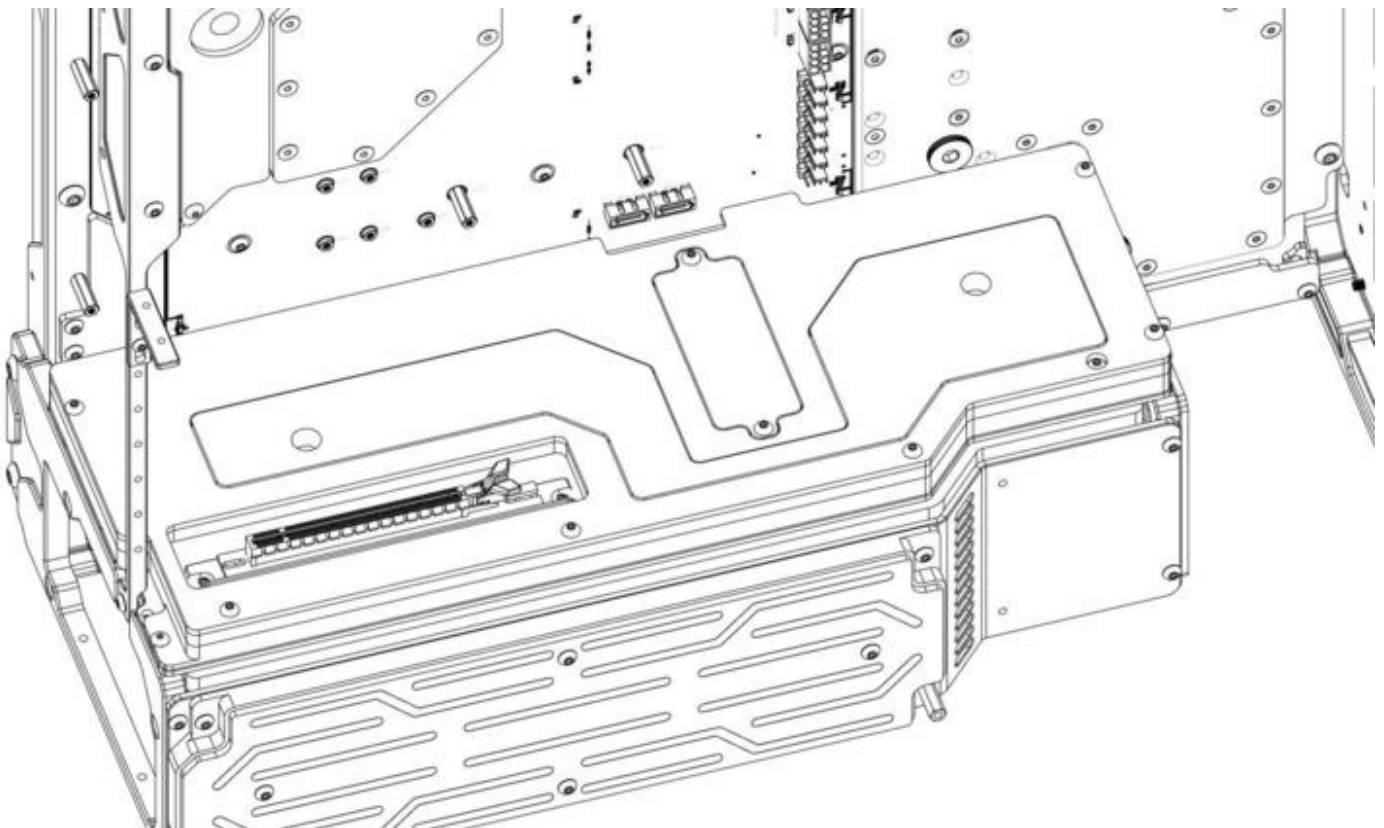
- Spectre 4 Enterprise.
- Spectre 4 Quantum.

Installation

Install PSU Top Shroud Distribution Plate

This Distribution Plate has been designed to be used for the GPU Loop in combination with the Spectre 4 Dual Loop Side Panel, but it can be used in any tube route and the Dual Loop Side Panel is not a requirement.

The PSU Top Shroud Distribution Plate comes with fasteners already installed and nuts holding them in position, so you only need to remove the nuts from the 4 fasteners (2 on each end) and then you can install the Distribution Plate onto the top of the PSU Shroud.



Install Rear I/O Distribution Plate

This Distribution Plate has been designed to be used for the CPU Loop and it can be used with or without the Dual Loop Side Panel. It can be used in any tube route though, for the CPU or GPU loop or both if you are building a single loop system. The fasteners are already installed on the Distribution Plate. Remove the two mounting fasteners and then use them to mount the Distribution Plate to the Rear I/O Panel of the case.

